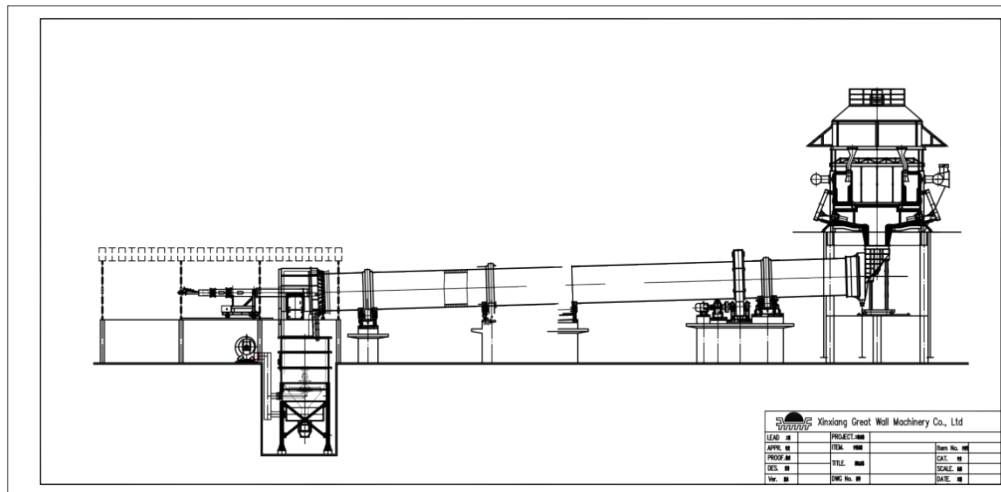


Process introduction:

Qualified limestone (20 ~ 50 mm) are lifted by bucket elevator to top silo of preheater. There are two level indicators (up and down) controlling the feeding amount, then they are separated averagely into preheaters' individual rooms. The limestone's temperature rises to about 900°C heated by kiln flue gas of 1150°C, about 30% of them are decomposed, and they come into the rotary kiln by hydraulic rod, where the limestone decomposed into CaO and CO₂. The decomposed limestone are put into the cooler, where its temperatures drops to 100°C and released. The hot air (600°C) will come to kiln after heat exchange, and mix with coal gas for mixture combustion. The exhaust gas is released by the blower into bag deduster through multi-pipe cooler, then into the chimney though exhaust blower.



Profile of active [lime production line](#)

The limestone from the cooler will be transported to the limestone final product silo through vibrating feeder, chain conveyer, bucket elevator, belt conveyer.

Characteristics of active [lime production line](#):

1. Large production, maximum capacity can reach 1500t/d
2. Quality of final product is well-distributed, and over-sintering is no more than 8%.
3. Activity of lime can reach 400ml

**Main structure of vertical cooler:**

Grate bar and discharge device for big block
Cooling chamber lower the cooler
Support Device



Main structure of rotary kiln:

- 1.Body
- 2.Riding wheel
- 3.Gear ring
- 4.Tire
- 5.Transmission device



Main structure of vertical preheater:

Upper feeding system: upper material bin, feeding chute

Preheater body: preheater chamber, suspension device

Stacker device: stacker part, frame, connecting rod.

Great Wall Machinery can undertake the 200-1500t/d activity lime production line EPC, including the the reach report, civil engineering, designing, equipment, installation and debugging --- “turnkey” service with production capacity and standard achieved.

Main equipment list and parameters:

designed capacity (T/D)		200	300	400	600	800	1000
product		active lime	active lime	active lime	active lime	active lime	active lime
preheater	specifications	RS-6.5×3.4	RS-7.5×3.4	RS-8.5×3.4	RS-10.4×3.4	RS-10.8×3.4	RS-13.5×4
	Number of push rod	6	8	10	12	16	18
kiln	specifications	Φ2.8×42M	Φ3.3×50M	Φ3.6×56M	Φ4×60M	Φ4.3×66M	Φ4.8×68M
	Effective volume (m ³)	190	292	430	575	738	1005
	speed (r/min)	0.45-2.22	0.2-1.9	0.22-1.57	0.48-1.57	0.21-1.57	0.19-1.98
cooler	specifications	LS-3×3	LS-3.6×3.6	LS-3.8×3.8	LS-4.1×4.1	LS-4.7×4.7	LS-5.2×5.2
	Feed temperature	1100±50℃	110±50℃	1100±50℃	1100±50℃	1100±50℃	1100±50℃
	Discharge temperature	<100℃	<100℃	<100℃	<100℃	<100℃	<100℃
	Weight(T)	35		40	50		

